



For over 35 years, the Washington Research Library Consortium has taken decisive action to empower students and faculty in our member institutions.

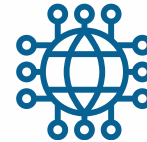
Through our collaborative partnership, WRLC consistently achieves substantive outcomes by:

- Hosting a preservation-quality space for print materials.
- Actively promoting college affordability through open access books, journals, and textbooks.
- Ensuring a secure environment for digital content.
- Strengthening partner library staff through centralized training, support, and professional development initiatives.
- Skillfully negotiating group discounts for shared purchases



### WRLC Community

- WRLC Staff: 18
- Member Institutions' Library Staff: 550+
- Students Served: 110,000+
- Faculty Supported: 9,000+



### Digital Resources

- JSTOR E-books Provided: 88,000
- Cost per Use: \$0.60
- DeGruyter E-books and Journals: 17,000
- Consortial Purchase Discount: 43%

## Impact

### Expanding Access & Affordability



#### Shared Collections Facility

- Optimizing campus library space
- Houses 1/3 of the WRLC Collective Collection
- Daily Courier: requests processed in <24 hours
- 1 out of every 6 checkouts is a WRLC loan



#### Shared Online Catalog

- 25 million items
- Enables staffing and resource efficiencies
- Expanded access for students & faculty








#### Financial Stewardship

- Ensuring sustainable costs
- Consortium Loan Service: 26,386 books borrowed in FY23
- Savings from CLS: \$1Million
- WRLC Storage: 3,447,934 volumes and 83,499 boxes
- OER textbooks will provide students with \$100,000 in cost avoidance in its first year



# Washington Research Library Consortium

Collaborative investments from our partners within WRLC empower us to collectively achieve ambitious objectives on a scale that would be cost-prohibitive when pursued independently. Our shared vision underscores the principle that each financial contribution to WRLC not only yields substantial returns but also fortifies our community of trust. This interdependent relationship serves as a cornerstone for the advancement of pedagogy, scholarship, and research, profoundly benefiting our academic ecosystem.

SAVINGS 	SCALE 	ACCESS 	EFFICIENCY 	COMMUNITY 
<ul style="list-style-type: none"> <li>• Save money through joint purchases</li> <li>• Save time by doing things once &amp; together</li> </ul>	<ul style="list-style-type: none"> <li>• Shared infrastructure &amp; technology</li> <li>• Shared central staff to support member library staff</li> <li>• Shared investigation of emerging priorities</li> </ul>	<ul style="list-style-type: none"> <li>• Extensive journal &amp; book collections</li> <li>• Shared collection of electronic books</li> <li>• Courier delivery</li> <li>• Digital collections</li> </ul>	<ul style="list-style-type: none"> <li>• Centralized negotiations</li> <li>• Central licenses</li> <li>• Shared platforms</li> <li>• Library users have access to all services in one place</li> </ul>	<ul style="list-style-type: none"> <li>• Network of experts</li> <li>• Professional development</li> <li>• Advocacy for academic libraries</li> <li>• Fictional peer groups</li> </ul>



AMERICAN UNIVERSITY  
WASHINGTON, DC

THE CATHOLIC UNIVERSITY OF AMERICA 

GALLAUDET UNIVERSITY

GEORGE MASON UNIVERSITY

THE GEORGE WASHINGTON UNIVERSITY  
WASHINGTON, DC

GEORGETOWN UNIVERSITY



1867  
HOWARD UNIVERSITY



MARYMOUNT UNIVERSITY

UNIVERSITY OF THE DISTRICT OF COLUMBIA  
1851